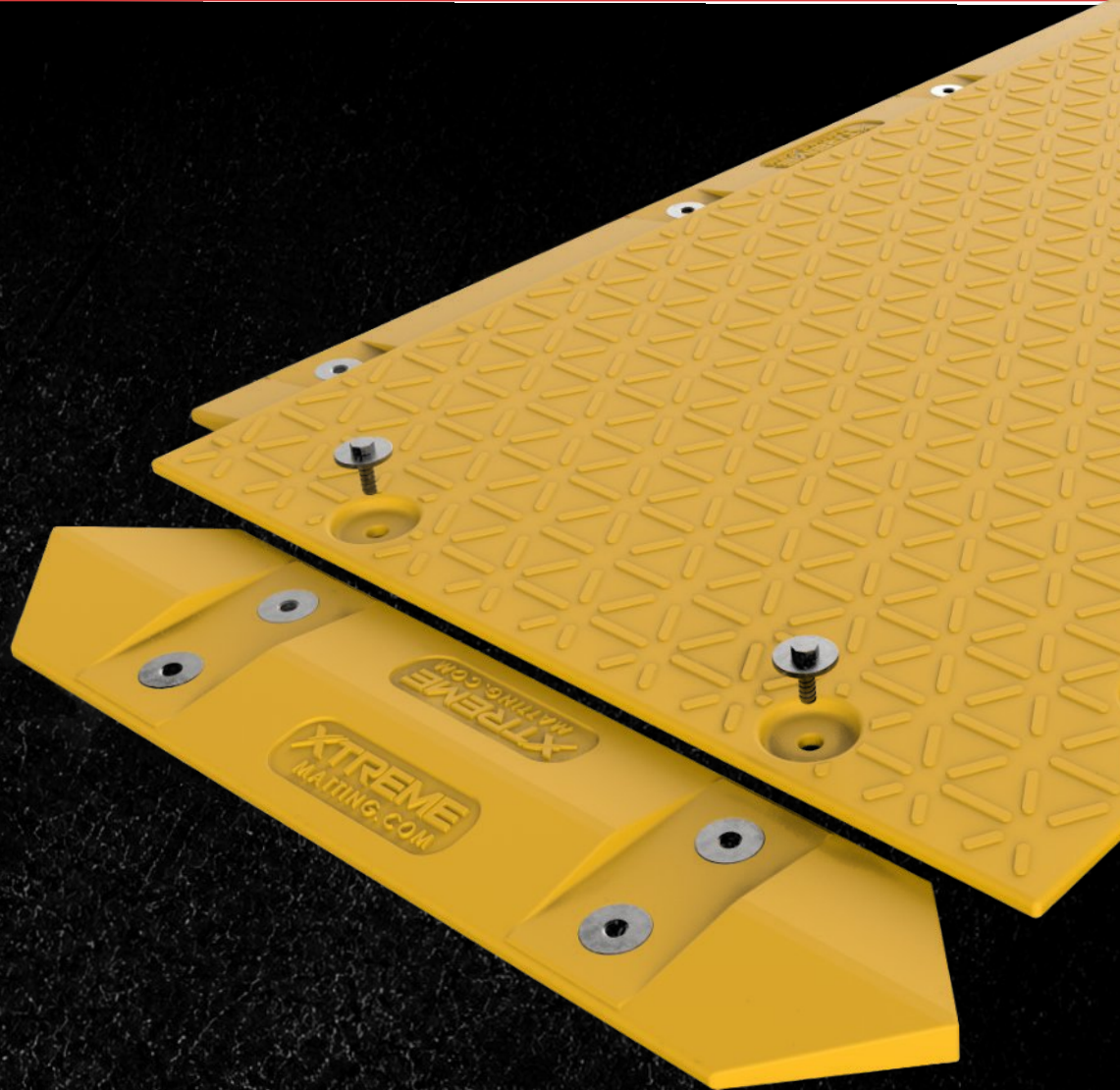


XTREME
MATTING SYSTEM

BUILT FOR EXTREME

HEAVY-DUTY APPLICATIONS



**SOLID
CORE**



**EXTREMELY
DURABLE**



**100%
RECYCLABLE**



**LIGHT
WEIGHT**



OIL & GAS



ACCESS ROADS



POWERLINE



CONSTRUCTION

WHY OUR MAT IS DIFFERENT

XTREME is the only manufacturer in the industry to produce a solid-core HDPE mat system.



PROPRIETARY SOLID CORE

With our true solid-core design, the mat delivers superior strength and durability over traditional open-core mats. The sealed core prevents fluids and contaminants from entering the mat, supporting cleaner, safer job sites.

FEATURES & BENEFITS



LIGHTWEIGHT

Up to 70% lighter than traditional wood mats, making transport and handling easier and more efficient.



SOLID INTERNAL CORE

The solid HDPE core delivers superior strength, impact resistance, and long-lasting durability.



MULTI-CONFIGURATION SETUP

Engineered to be installed in multiple configurations to adapt to changing site conditions and layout demands.



HIGH COMPRESSION RATING

Rated at 828 PSI, the XTREME mat delivers industry-leading load-bearing capacity in its class.



ELIMINATES CROSS-CONTAMINATION

Built with a solid-core design and non-absorbent HDPE material, our mats are resistant to cross-contamination.



BUOYANT

Designed to perform in wet, soft, and challenging conditions while providing a stable and secure working surface.



SELF-ALIGNING INSTALLATION

Integrated self-aligning pockets are engineered for fast, easy installation in all types of site conditions.



100% RECYCLABLE

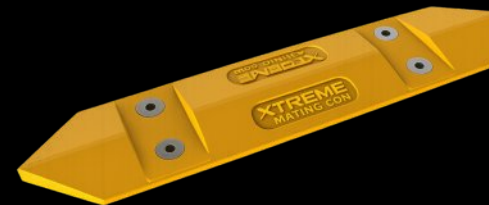
Environmentally responsible solution designed to be fully recyclable at the end of its service life.

SPECIFICATIONS

Shipping Length	4.34m / 14.25ft	Internal Core	Solid Filled HDPE Closed Cell
Shipping Width	2.29m / 7.5ft	No. of Connectors	6 Open / 6 Threaded
Usable Length	4.11m / 13.5ft	Temperature Rating	-50° C / -58° F to 60° C / 140° F
Usable Width	2.06m / 6.75ft	Load Capacity	~ 56kg/cm2 / 828 PSI / 582 Ton/m2
Area	8.46m2 / 91.13ft2	Observed Comp. PSI	Over 70kg/cm2 / 1000 PSI
Thickness	100mm / 4in	Static Dissipative	Yes
Weight	385kg / 860lbs	UV Protection	Yes
Material	High Density Polyethylene	Flammability Rating	UL94HB
Color	Safety Yellow	Life Expectancy	15+ Years

ACCESSORIES

TRANSITION/RAMP SUPPORT



BOLT CONNECTOR



LET'S BUILD STRONGER TOGETHER.

☎ 1.800.680.1740

✉ sales@xtremematting.com

🌐 XtremeMatting.com



1-Year Manufacturer Warranty